

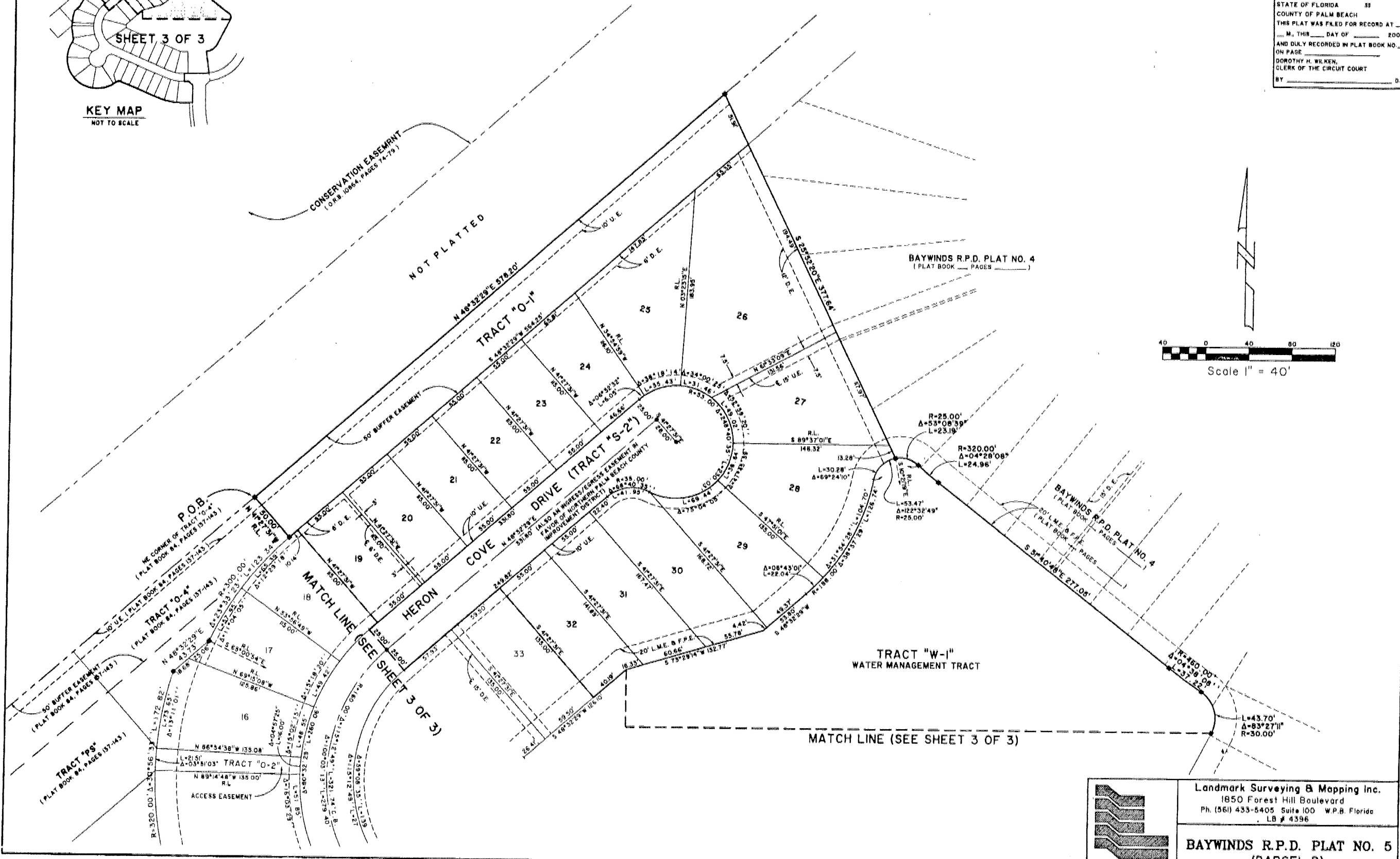
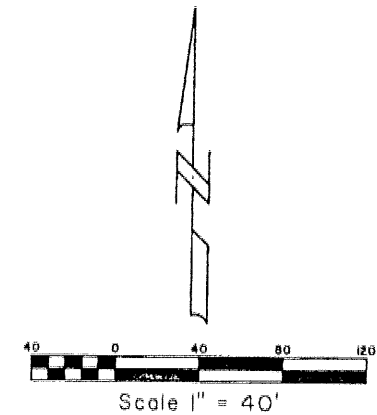
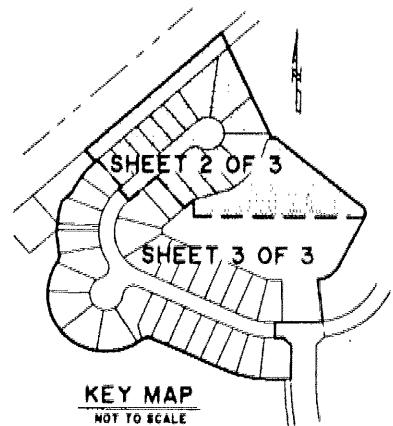
BAYWINDS R.P.D. PLAT NO. 5

BEING A PORTION OF SECTION 19, TOWNSHIP 43 SOUTH, RANGE 42 EAST AND THE REPLAT OF A PORTION OF TRACT "L-3", BAYWINDS R.P.D. PLAT NO. 1 AS RECORDED IN PLAT BOOK 84, PAGES 137 THROUGH 143, PUBLIC RECORDS OF PALM BEACH COUNTY, FLORIDA, ALL LYING IN SECTION 19, TOWNSHIP 43 SOUTH, RANGE 42 EAST, CITY OF WEST PALM BEACH, PALM BEACH COUNTY, FLORIDA.

SHEET 2 OF 3

190

STATE OF FLORIDA 33
 COUNTY OF PALM BEACH
 THIS PLAT WAS FILED FOR RECORD AT _____
 M., THIS _____ DAY OF _____ 2001
 AND DULY RECORDED IN PLAT BOOK NO. _____
 ON PAGE _____
 DOROTHY H. WILKEN,
 CLERK OF THE CIRCUIT COURT
 BY _____ D.C.



	Landmark Surveying & Mapping Inc. 1850 Forest Hill Boulevard Ph. (561) 433-5405 Suite 100 W.P.B. Florida LB # 4396
	BAYWINDS R.P.D. PLAT NO. 5 (PARCEL D)